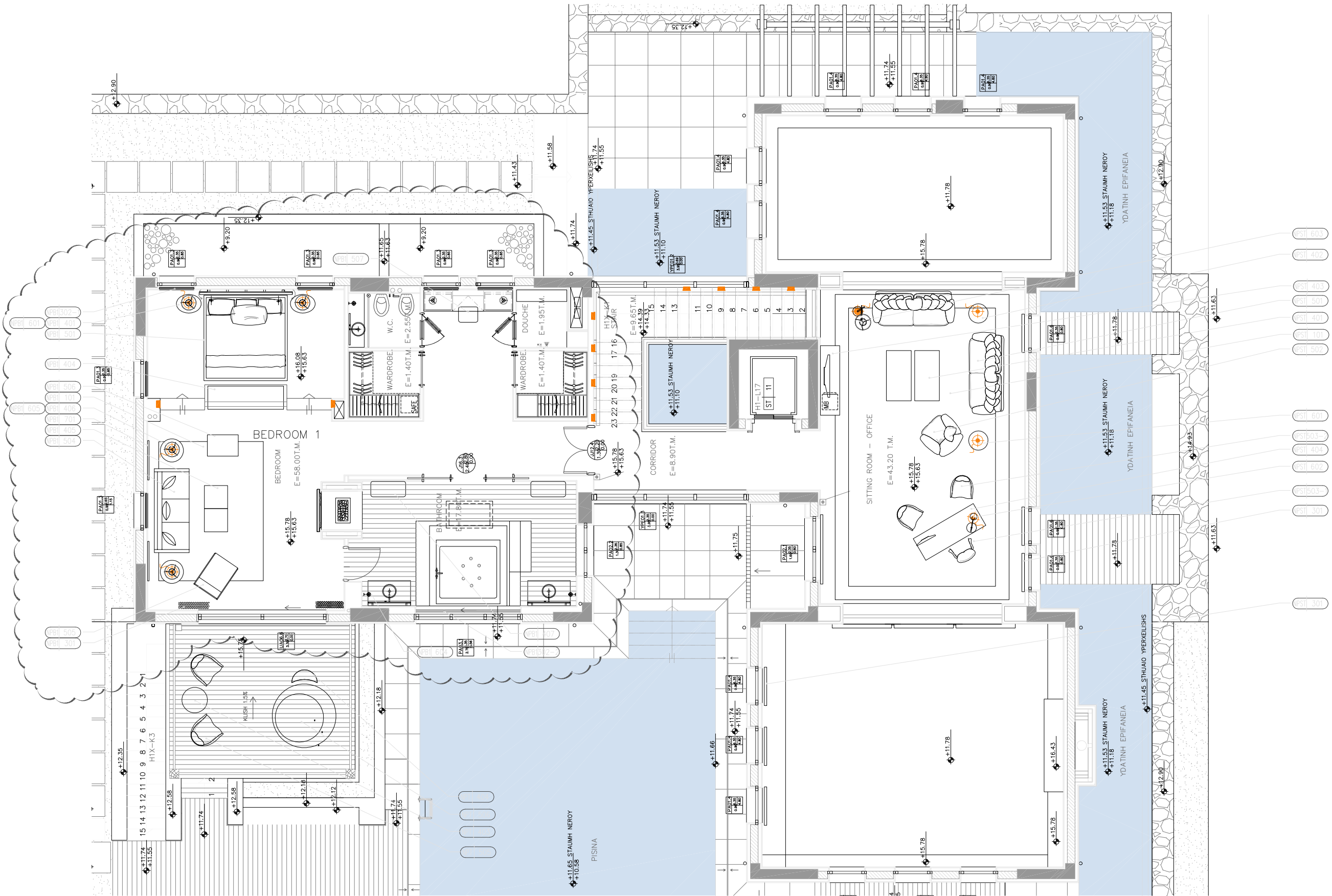


This drawing is for information only to be used by the contractors as a general arrangement of interior conditions. It has been made from available information, however measurements are to be verified on project site. This drawing must be verified and approved prior to final detailing and fabrication.

This drawing is the property of MKV. It is only to be used for the project and site specifically identified herein and is not to be used on any other project. It is to be returned upon request.



NO	DATE	DESCRIPTION
3	06.02.09	UPDATED FF& E CODES
2	18.12.06	UPDATED ARCHITECTURE XREF
	08.10.06	ADDED UP DATED ARCHITECTS LAYOUT ADDED BALUSTRADE

REVISIONS

PROJECT NAME  
**NAVARINO ROMANOS NORTH\_HOTEL**

ISSUE  
 ISSUED FOR REVIEW ONLY (NOT FOR CONSTRUCTION)  
 ISSUED FOR CONSTRUCTION

SHEET TITLE  
**PRESIDENTIAL SUITE FF&E LAYOUT FIRST FLOOR LEVEL 15.70**

DRAWING NO.  
**PSN 01-02**

SCALE **1/50** DRAWN BY  
PROJECT NO **0327\_SH** CHECKED BY

**MKV DESIGN Ltd**  
INTERIOR ARCHITECTURAL DESIGN

LONDON OFFICE  
29-31, High Street, London, WC2R 3TH, UK  
Tel: +44 (0)20 7322 2200 Fax: +44 (0)20 7322 2201  
Website: www.mkv-design.com Email: info@mkv-design.com